

Ash Wednesday 2012

Dear Parents:

May the grace of our Lord be always with us!

I would like to thank all of you who have done so much to support Sacred Heart School throughout the years. For fifty- six years Sacred Heart School has served our parish community well. Throughout the remainder of the school year we will take the opportunity to celebrate the many blessings which the school has been for us.

I am conscious of the fact that you have given considerable thought to what your options are for your child's future schooling. While I hope that many of you will choose to be a part of our parish's efforts to create a new regional school, I realize that some of you will choose public education or a private school while others will choose a charter school or home schooling. Some of you may opt for a Catholic school other than the newly formed Holy Cross Regional Catholic School. The purpose of this letter is to explain to you your rights and responsibilities concerning Catholic education for your children.

***School families who are registered members of Sacred Heart Parish but reside outside of the parish boundaries.***

Approximately 50 school families reside outside of our parish's boundaries. (*Our boundaries may be found at the end of this letter.*) While we would miss you, it is your right and may be more convenient for you to withdraw from Sacred Heart and register at the parish in whose boundaries you reside. You would then be free to go to that parish's elementary school and receive the parishioner rate tuition. The majority of people who fall in this category reside within Blessed Teresa of Calutta parish while still others live further North and within Chester county.

Some families, because of the distance to St. Eleanor, have already spoken with Fr. Brandt concerning their desire to join Blessed Teresa. In a recent conversation with him, Fr. Brandt told me that he will be happy to receive as parishioners and students those families who live within his boundaries. He asks that you simply inform me that you are withdrawing from Sacred Heart. No family may be registered members of more than one parish in this area.

For those families who are registered and live outside of our boundaries, there will be three criteria which will determine whether or not it will be possible for you to remain a member of Sacred Heart and receive the subsidy at the regional school for the next academic year. The criteria is as follows:

- You need to be active, practicing Catholics who regularly attend Sunday Mass at Sacred Heart.
- You need to be active within our community as demonstrated by voluntary service to the

parish.

- You need to financially support our parish through the Sunday collection.

If you meet these criteria, we will be happy to keep you on our parish registry.

***Sacred Heart Parishioners who reside within the parish boundaries***

In order to qualify for the parish subsidy at the new regional school, the above mentioned criteria needs to be met by Sacred Heart parishioners who reside within our boundaries. If any of the above mentioned criteria are not met, you will be free to attend the regional school but you will be responsible for the full tuition.

***Catholic families who are members of other parishes***

While Sacred Heart has been happy to assist you over the years, we will not be able to assume any financial responsibility for you. Up until this point your parish has paid Sacred Heart a subsidy to attend our school. You will need to speak with your proper pastor concerning future educational options.

***Non-Catholic Families***

Over the years we have had friends of other faiths become members of our school family. Once all parish families of both Sacred Heart and St. Eleanor have had the opportunity to enroll their children at the new school, you will be welcome to enroll your child at the new regional school. As per Archdiocesan instruction, you will be responsible for the full amount of tuition.

As we create something new may the words of the Psalmist be our own: "Lord, give success to the work of our hands."

God love you!

Father DiMaria

Sacred Heart Parish boundaries as established by the Archdiocese of Philadelphia are as follows:

*Ridge Pk. from Limerick Rd. to Township Line Rd. (Limerick-Upper Providence Township line); to Linfield-Trappé Rd.; to Borough Line Rd.; to Hess Rd.; to Rittenhouse Rd.; to Lewis Rd.; to Bechtel Rd.; to Old State Rd.; to Hafner Rd.; to Schuylkill River; to Trinley Mill Rd.; to Major Rd.; to Benner Rd.; to Lewis Rd.; to Linfield-Trappe Rd.; to Limerick Rd.; to Ridge Pk.*

If you need further clarification, please contact Dolores in the parish office.

Monday, February 20, 2012

Dear Sacred Heart School Parents,

The Sacred Heart Home & School Board met on Sunday, February 19. Needless to say, the results of the Blue Ribbon Commission were the focus of our discussion. Many rumors have been generated by the lack of information. Here is what is known presently;

- Be assured that an appeal was submitted by Sacred Heart. It was not withdrawn. The Sacred Heart committee presented a strong case for the financial stability and future sustainability of the school.
- The Implementation Team, composed of members from St. Eleanor and Sacred Heart, is addressing your questions, submitted to Home & School, since the Blue Ribbon's first announcement on January 6, 2012. The list of FAQs will be published soon.
- More information can be found at the Facebook page "Regional School for St. Eleanor & Sacred Heart Parish Families" or <https://www.facebook.com/#!/RegionalSchool>. A new page will be created with the new name Holy Cross Regional Catholic School. You do not need a Facebook profile to access the page. Please check this out periodically for updates.

Moving forward, the Home & School Board will continue to be the voice of our school parents. Therefore, bring your concerns to our attention via email to [hsa-board@sacredheartroyersford.org](mailto:hsa-board@sacredheartroyersford.org).

Another Spirit Wear sale will be held before the end of the school year. In the meantime, feel free to purchase SHS Spirit Wear directly from A La Carte Designs, 735 West Main Street, Trappe, PA 19426, or call 610-831-9057.

Home & School intends to help celebrate the history of Sacred Heart School throughout the next 4 months. It is our hope that this will be a fun and memorable time for your children! We welcome your ideas and will seek your support.

Yours in Faith,

Sacred Heart Home & School

# SACRED HEART PARISH RAVIOLI DINNER FUNDRAISER

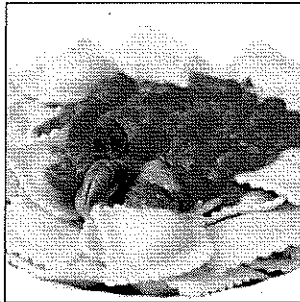
Sacred Heart Parish is holding a Ravioli Dinner

Saturday, February 25, in the School Cafeteria (Parish Hall).

**TIME: 5 PM - 8:00 PM with 2 SEATING TIMES:**

1st Seating — 5:00 PM -- 6:30 PM

2nd Seating — 6:30 PM — 8 PM



Meal includes cheese ravioli's, homemade meatballs and sauce, salad, dessert and beverage.

*Proceeds will go toward our organ fund.*

Cost is \$10 for adults and children 10 and above.

Children 5 to 10 years \$5 and under 5 years free.

Take-outs available.

If anyone would like to volunteer some of their time toward this project please email or call Dolores in the Church Office with your name & phone number and someone from this fundraising committee will get back to you. ([dolores@sacredheartroyersford.org](mailto:dolores@sacredheartroyersford.org) or 610-948-5915 Ext. 120)



-----  
**Come Join Us and Select Your Seating Time Today!**

**Advance Order Form — Complete and Return to the Church Office or to the Offertory Basket on Sunday**

Name: \_\_\_\_\_

Address: \_\_\_\_\_

Phone: \_\_\_\_\_ # of Tickets: \_\_\_\_\_

Amount Paid: \_\_\_\_\_ Preferred Seating Time: \_\_\_\_\_



February 2012

Dear Sacred Heart Parish Families,

During the holy season of Lent, we are all called to follow the path of our Lord and Savior who journeyed through his death to his resurrection. It has been the tradition of the Catholic Church to prepare for Easter by practicing six weeks of prayer, almsgiving, and penance. It is through these practices that we become closer to the Lord.

Each Lent, Sacred Heart Parish participates in Operation Rice Bowl. This program embraces the traditional practices of Lent and challenges us to **pray**; to **fast** in solidarity with those who are hungry; and **give** sacrificial contributions to those in need. The contributions made through Operation Rice Bowl support Catholic Relief Services' development in over 50 countries. Operation Rice Bowl also assists people locally. 25% of the Rice Bowl donations are used by Nutritional Development Services in the purchase of food for area food cupboards and soup kitchens.

Each family will receive a Rice Bowl and Lenten calendar. Please refer to the Lenten calendar which provides suggestions as to how you can make the Operation Rice Bowl program meaningful for your family. We ask that you add your contributions to the bowl during Lent. **Please return your Rice Bowl with your Lenten contributions to the OFFICE OF RELIGIOUS EDUCATION by Wednesday, March 28<sup>th</sup>.** Your sacrificial contributions made during Lent will assist our brothers and sisters in Christ who are in need.

On the back of this letter is the Sacred Heart Lenten Schedule. May God bless you and your families during this holy season of Lent!

Sincerely,

*Laura E. Hritz*

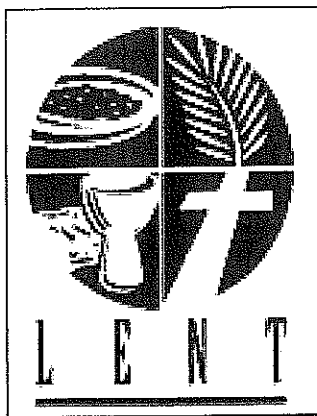
Laura E. Hritz

Coordinator of Religious Education

**Operation Rice Bowl Prayer**

We lift our prayers to you, God of Love, on behalf of our brothers and sisters in need. As we learn about their struggles, our almsgiving comes to their aid; our fasting unites us in their hunger. You call us to be disciples for all nations. Bless us this Lenten season.

Amen.



## Lenten Schedule

### Ash Wednesday, February 22

Ashes will be distributed at Holy Mass at 8 a.m. and 7 p.m.

Liturgy of the Word and Distribution of Ashes at 11:30 a.m.

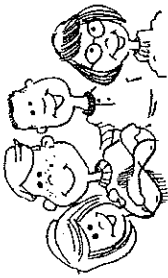
No Confessions on Ash Wednesday evening.

### Adoration of the Blessed Sacrament:



Beginning on Wed., February 29<sup>th</sup>, adoration of the Blessed Sacrament will occur in Church during every Wednesday of Lent immediately following Mass. The Little Flower Perpetual Adoration Chapel will close at 8:30 a.m. each Wednesday during Lent and reopen at 8:30 p.m. following Stations of the Cross and Benediction.

### Stations of the Cross and Benediction

On Tuesdays of Lent at 2:00 p.m.  
On Wednesdays of Lent at 7:30 p.m.



# 2012 Family Lent Calendar

 = a day of fasting and abstinence from meat  
 = a day of abstinence from meat

Sunday	Monday	Tuesday	Wednesday	Thursday	Friday	Saturday
<b>26</b> After Mass today, explain the Gospel and the homily in terms your children can understand.	<b>27</b> Contact Catholic Relief Services (877-HELP-CRS, www.catholicrelief.org) to see how you can help any of their ongoing projects.	<b>28</b> Invent a new family prayer you can say together each day.	<b>22</b> Take your family to an Ash Wednesday liturgy and wear the cross of ashes all day.	<b>23</b> Tape a drawing of a vase on the fridge and label it "Lent." Each day draw a flower in the vase and watch Lent blossom.	<b>24</b> Share a meatless family meal. Discuss your Lenten offerings to be sure all are doable and sacrificial.	<b>25</b> Choose a family Lenten offering, such as giving up desserts, attending daily Mass, or praying a family Rosary regularly.
<b>4</b> Before Mass today, pick a saint represented in one of the statues in your church and find out more about him or her during Lent.	<b>5</b> Collect stuffed animals or soft pillows in good condition and bring them to a local nursing home. Older folks love soft things to hug.	<b>6</b> Ask each person to share a game, toy, or treat with someone else in your home.	<b>7</b> Plan how each of you can show kindness or compassion to someone else tomorrow.	<b>8</b> Think of someone you don't like and say three nice things about him or her.	<b>9</b> Figure out how much your family saved by not eating meat today, and put that money in the poor box at church.	<b>10</b> At bedtime say, "Let's turn our hearts to God and think of him." Sit in silence together for a few minutes.
<b>11</b> Light a candle in church today for someone who passed away or who needs special help.	<b>12</b> Ask each family member to write a letter to Jesus thanking him for his sacrifice on the Cross.	<b>14</b> Make cookies and bring them to a nearby nursing home.	<b>15</b> Encourage each family member to perform an examination of conscience.	<b>15</b> Place a crucifix or picture of Jesus in a central place to keep the focus on him.	<b>16</b> Whenever someone does a good deed, put a jelly bean in a jar. Share the jelly beans at Easter!	<b>17</b> Ask each person to make a sacrificial offering, such as doing an extra chore without being asked.
<b>18</b> <b>Lactare Sunday</b> Have a special meal at home or a restaurant to celebrate the half-way point through Lent.	<b>19</b> Pick a friend or neighbor and perform an anonymous good deed for him or her.	<b>20</b> Encourage all family members to refrain from bickering today.	<b>21</b> Say a short prayer before each cross or crucifix in your home.	<b>22</b> Make up a box for a needy family or homeless shelter. Put canned goods, clothing, toiletries, and gently used toys in it.	<b>23</b> Serve pretzels as a reminder that Catholics used to fast from milk, butter, eggs, cheese, cream, and meat.	<b>24</b> Make simple crosses out of construction paper. Write on them, "He died for me," and post them around your home.
<b>25</b> After Mass, light a candle, and recite the Apostle's Creed as an affirmation of faith.	<b>26</b> Pray for the victims of the earthquake still suffering in Haiti.	<b>27</b> Send a card to someone who might need cheering today.	<b>28</b> Give up a favorite toy or treat just for today.	<b>29</b> Visit someone who is sick and can't leave home.	<b>30</b> Place any final donations in the box you set up. Make a family trip to deliver it to its destination.	<b>31</b> Go to Confession or attend a Reconciliation Service. Then go out afterwards to celebrate forgiveness.
<b>1</b> Have a Palm Sunday procession around the house and take turns playing Jesus.	<b>2</b> Take a walk outside and look for signs of new life.	<b>3</b> Forgive someone who hurt you today.	<b>4</b> Get up 15 minutes earlier than usual today and pray as a family.	<b>5</b> Wash and dry each other's feet in commemoration of Jesus washing the feet of his Apostles.	<b>6</b> Pray the Stations of the Cross today, and meditate on each one.	<b>7</b> Dress a doll in a white garment and talk about the Baptismal vows we renew each year.